

# EXPERTS IN WATER.....

**WatStech is a successful independent research and consultancy group focussing on water and wastewater treatment**

Our staff have over 30 years combined experience of water and wastewater treatment.

We specialise in;

- Process evaluation & development
- Independent technology assessment
- Commissioning support
- Tailored water and wastewater analysis

WatStech provides services to evaluate, independently, water treatment processes and technologies. We also provide customised services designed and developed in-house to assist with process selection.

WatStech has a proven track record of meeting client's needs and expectations our target is always to complete projects on time and on budget. We are flexible and will aim to respond quickly, efficiently to meet client's targets.

We were originally a spin-out company from the University of Wolverhampton, initially formed as a research group in 2000, after 5 years WatStech Ltd. was created.

We will also maintain a friendly, fair and creative work environment which respects diversity, new ideas and hard work. We will strive to attract the highest level of academic recognition for our work.



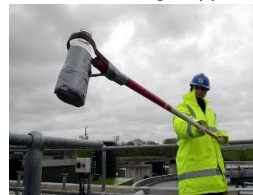
## Our Services

WatStech offer a wide variety of services encompassing all aspects of water and wastewater treatment

- Flow & Load analysis



- Commissioning Support



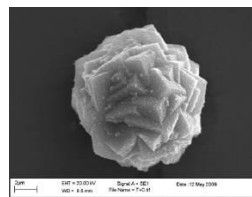
- Technical Support



- GAC evaluation



- Scaling Identification and Formation



- Wastewater Characterisation



- Filtration Technology



- And more.....

..... & WASTEWATER TREATMENT

## EXPERTS IN WATER.....

### Tailored Water & Wastewater Analysis

#### Water & Wastewater Analysis

- Organic analysis - COD, BOD, TOC, colour, UV absorbance
- Solids - % moisture, loss on ignition, organics
- Inorganics - nitrate, phosphate, sulphate etc. (extensive range via our spin out partner)
- Physical - pH, turbidity, conductivity, TSS, Ash & VSM
- Biological - bacterial counts, biofilm analysis



#### Analysis of adsorption media e.g. GAC (Granular Activated Carbon) using RapStech® service

- Adsorption - Isotherms, pesticides and inorganics
- Inorganics - AAS, XRD, XRF
- Organics - TGA, TOC, immunoassays
- Porosity - BET surface area, micropore volume
- Other - bed expansion, apparent density
- Regeneration furnace

**RapStech®**  
Granular Activated Carbon (GAC) Profiling



#### Specialised, customised analysis

- Rapid Small Scale Column Tests (RSSCT) RapStech®
- Biodegradable COD, Soluble COD, Particulate COD (amenability of wastewater for BNR/bio-p)
- Phosphate Release/Uptake rates
- Nitrification/Denitrification rates
- Biological fouling using Robbins device
- Struvite/calcite formation
- Scale formation and removal



#### Our Customers

WatStech has a number of links to companies or public bodies who have directly or indirectly collaborated on projects, these include;

Severn Trent Water Ltd.  
Anglian Water Ltd.  
Dwr Cymru Welsh Water Ltd.  
United Utilities plc  
Yorkshire Water Ltd.  
Northumbrian Water Ltd.  
Severn Trent Services Ltd.  
Grafham Carbons  
Imtech Process Ltd.  
Mouchel Group plc  
GlaxoSmithKline  
Zenith International  
Galvanizers Association  
Manufacturing Advisory Service (MAS-WM)

#### Other links or associations

CIWEM (Chartered Institution of Water & Environmental Management)  
University of Wolverhampton  
University of Birmingham  
Imperial College, London  
WaterAid

WatStech Ltd.  
The Technology Centre,  
Wolverhampton Science Park,  
Wolverhampton, WV10 9RU  
Company no. 5404280  
VAT no. 857 6311 06

Tel: 08456 123 820  
Fax: 08456 123 821

[www.watstech.com](http://www.watstech.com)

**WatStech**  
Water Science & Technology Group

[www.watstech.com](http://www.watstech.com)



..... & WASTEWATER TREATMENT