

# ScaleStech

Scaling/Fouling Identification and Formation

## Scaling Down the Problem

### The Service



WatStech has developed the capability to evaluate various forms of crystallisation fouling from e.g. wastewater treatment systems (e.g. struvite) and domestic water systems (e.g. calcite).



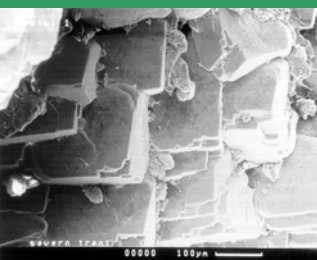
### The Solution



A specially tailored analytical suite that can provide a critical evaluation of your sample properties.



### The Support



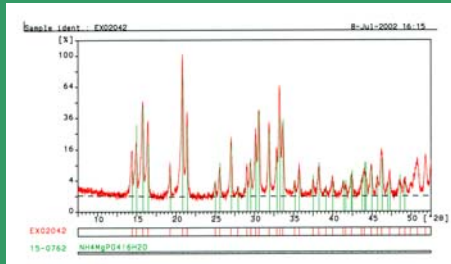
We provide independent, focused, and confidential support. Evaluations can be tailored to client's needs. WatStech offers 30 years combined water and wastewater experience.



# Evaluating Properties of Crystallisation Fouling

## X-Ray Analysis

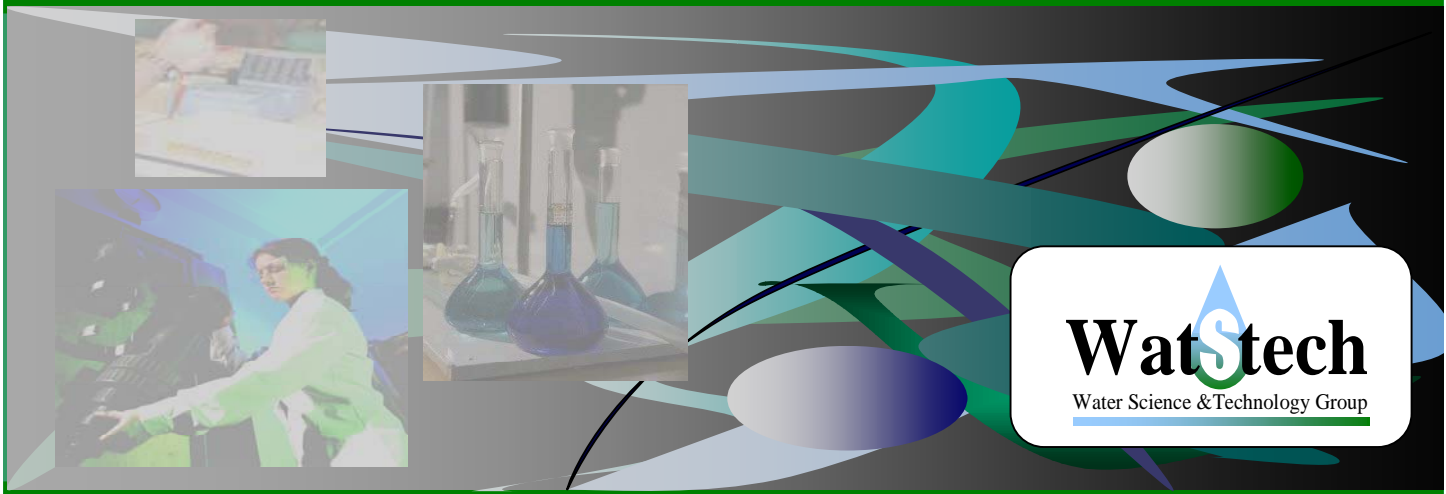
Diffraction spectrum is produced and compared to a database of 20,000 spectra, a best fit line is shown indicating nature of the crystalline compound and identification.



## Inorganic Content

Inorganic content analysed using Inductively Coupled Plasma Atomic Emission Spectroscopy (ICP-AES) or Atomic Absorption Spectroscopy (AAS).

**% ASH** determined as an indicator of inorganic/organic content.



**WatStech**  
Water Science & Technology Group

# Evaluating the Process of Fouling

We have the facilities to evaluate;

- Struvite/calcite formation using a crystallisation fouling system
- Scale formation using simulated hard or soft waters
- Biological fouling using a modified Robbins Device

**AND MORE....**



**WatStech Ltd.**  
[www.watstech.com](http://www.watstech.com)  
Email [info@watstech.com](mailto:info@watstech.com)  
Tel. 08456 123 820  
Fax. 08456 123 821

